



Montgomery County Hospital District

Jordan Anderson ~ Assistant Chief
2018



MCHD's Enabling Legislation

MCHD shall assume full responsibility for the furnishing of medical and hospital care for the needy residents of Montgomery County

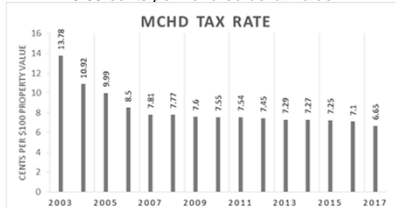
Enabling legislation Sec 23A. (b) (1)

2



Tax Rate

6.65 cents per hundred dollar value



3



History of the District

The Montgomery County Hospital District (MCHD) was created by special legislation in 1977 as a political subdivision of the State of Texas.

1977-2010: Emergency Medical Services and Health Care Assistance Program

2010 to Current: Emergency Medical Services, Health Care Assistance Program AND Public Health Department



Mission & Vision



Mission

Our mission is to care for the indigent and provide EMS services while protecting the interest of the taxpayers and insuring long-term stability through fund development.

Vision

Our vision is cost effective indigent care and taxpayer supplemented EMS with total professionalism administered through an elected board of directors.



Program Governance - Goal

Montgomery County
Hospital District
Balancing the Needs

Taxpayer (Voter) - Desire a
Cost Efficient and Effective
System

Patients (Community) - Desire
to have their Health Needs
Served with ease of access to
care and desire quality care

Healthcare Providers - Desire
the Resources and Tools to do
the job



Our Board of Directors

- The MCHD Board of Directors is made up of seven elected members, three at-large and the remaining four elected from different commissioner's precincts of which they are a resident. Each member serves a four year term.
- The Board of Directors meets monthly, every 4th Tuesday at 4pm
- Board meeting agenda's minutes and audio can be found on our website at www.mchd-tx.org

8



Health Care Assistance Program (HCAP)

Ade Moronkeji, MPH
HCAP Manager



Eligibility Criteria

- Determined by Texas Health and Safety Code Chapter 61, Texas Administrative Code, State CIHCP policy, and MCHD Board policy and enabling legislation
- Residence – must live in Montgomery County
- Citizenship – no undocumented aliens
- Household Income – up to 133% of FPIL
 - \$1,316/month for single person, \$15,800/annually
 - \$2,693/month for household of four, \$32,319 annually
- Resources – up to \$2,000 (\$3,000 if aged or disabled)
- Medical Need – not insurance

Note: We have several screenings to prove eligibility, including contracted services with Boon Chapman



Basic Services

- Physician services
- Annual physical examinations
- Immunizations
- Medical screening services
 - Blood pressure, blood sugar, & cholesterol screening
- Laboratory and x-ray services
- Family planning services
- Skilled nursing facility services
- Prescription drugs
 - 3 per month
- Rural health clinic services
- Inpatient hospital services
 - Conroe Regional Medical Center, Tomball Regional Hospital, Kingwood Medical Center, Cleveland Regional Medical Center, North Cypress Medical Center, Memorial Hermann (all system hospitals), St. Luke's The Woodlands (only TW)
- Outpatient hospital services



Extended Services

- Advanced practice nurse services
- Ambulatory surgical center (freestanding) services
- Catastrophic Oncology services
- Colostomy medical supplies and equipment
- Mental Health-Counseling services
- Diabetic medical supplies and equipment
- Durable medical equipment (DME)
- Emergency medical services (EMS)
- Home and community health care services (in special circumstances with authorization)
- Physician Assistant services (PA)
- Federally qualified health center services (FQHC)



Montgomery County Public Health

Promoting a Healthy, Resilient Community



Public Health in Montgomery County

Montgomery
County
Environmental
Health Services

- County agency with county employees
- Primarily taxpayer funded
- Responsible for food and water safety, sewage/septic, permitting and mosquito control
- Located at 501 N. Thompson in Conroe

Montgomery
County Public
Health District

- Political Subdivision with contracted employees
- Primarily grant funded
- Responsible for prevention and control of diseases, health education and public health emergency preparedness
- Located at 1300 South Loop 336 West in Conroe

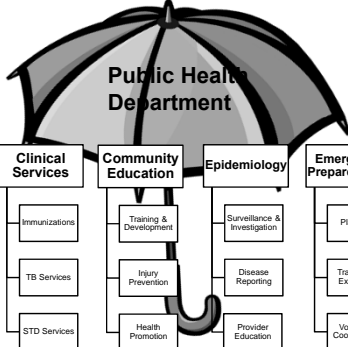


Public Health in Montgomery County

- Regulation: Title 2, Subsection F, Chapter 121 of Texas Health and Safety Code, Local Public Health Reorganization Act
- Funded primarily by DSHS and DPS grants and local matches
- Contracted to UTMB Conroe from 1991- June 2010
- Public Health District formed in 2010
- Contracted to the MCHD as of July 2010
- Public Health staff are MCHD employees
- Montgomery County Public Health District
 - Collaborative entity
 - Open to all political subdivisions



Public Health
Prevent. Promote. Protect.
Montgomery County
Public Health District





Emergency Medical Services



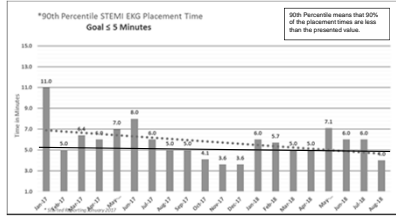


About our EMS

- Covers 1,100 square miles
- 75,000 calls/year
 - Emergency and Non-Emergency
- Population > 575,000
- 36 units 1 Deputy Chief, 4 District Chief, 1 Squad, 30 Medic Units

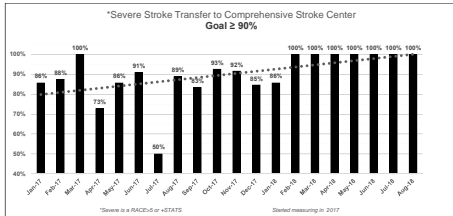


EKG Placement Time



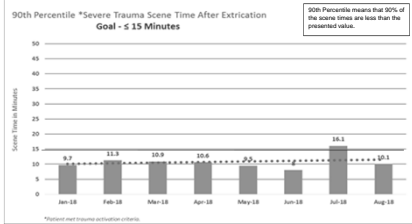


Stroke Destination Compliance





Trauma Scene Time Compliance

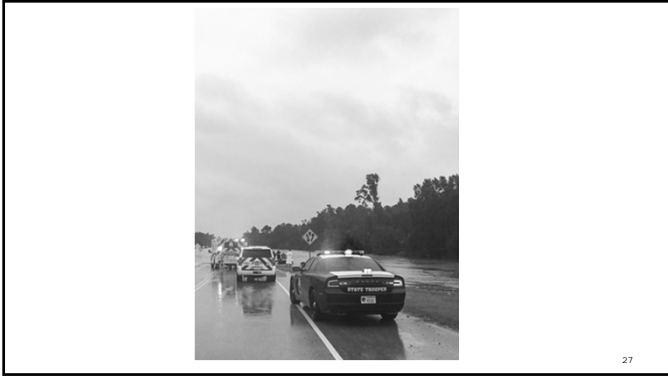




25



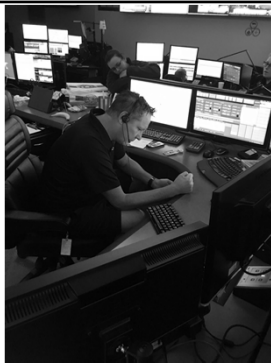
26



27



28



29



30
